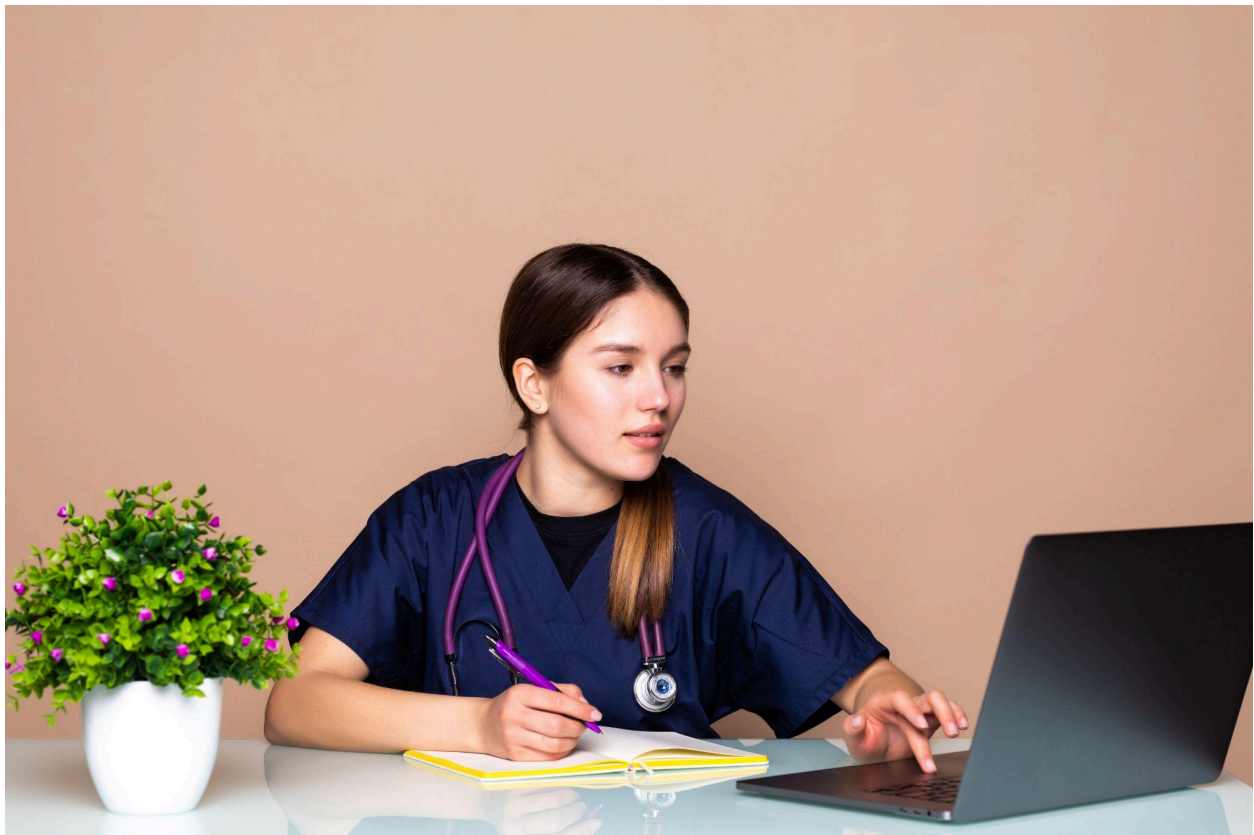


Doctoral Nursing Growth Through Reflection, Evidence, and Leadership Integration

Doctoral nursing education is designed to prepare professionals for roles that demand advanced thinking, scholarly judgment, and strategic leadership. Nurses at this level are expected to influence healthcare systems, guide practice improvement, and contribute to the advancement of professional knowledge. Structured academic assessments play a critical role in shaping these competencies by guiding learners through intentional stages of development.

Rather than focusing solely on theoretical knowledge, doctoral learning emphasizes reflection, evidence-based reasoning, and practical application. This progression allows nurses to move from understanding their professional identity to leading meaningful change within complex healthcare environments.



Reflective Foundations for Advanced Nursing Practice

Professional leadership begins with self-awareness and critical reflection. [NURS FPX 8006 Assessment 1](#) centres on reflective inquiry as a tool for examining professional experiences, values, and responsibilities within advanced nursing roles. Through reflection, learners gain insight into how their perspectives influence decision-making and leadership behavior.

This assessment encourages nurses to analyze significant clinical and professional experiences, identifying lessons that shape their current practice. By connecting experience with scholarly concepts, learners deepen their understanding of ethical responsibility, accountability, and professional growth. Reflection supports intentional development rather than reactive practice.

Additionally, reflective inquiry strengthens emotional intelligence, which is essential for leadership in complex healthcare settings. Nurses learn to recognize their responses to stress, uncertainty, and collaboration challenges, enabling more thoughtful communication and relationship-building with colleagues and stakeholders.

Enhancing Clinical and Organizational Decisions Through Evidence

Advanced nursing leadership requires the ability to evaluate research critically and apply evidence responsibly. [NURS FPX 8006 Assessment 2](#) focuses on strengthening scholarly reasoning by guiding learners through the process of evidence-based analysis and application.

During this stage, nurses review current research, assess the quality of evidence, and synthesize findings relevant to practice or organizational challenges. This process enhances analytical thinking and ensures that decisions are grounded in credible scholarship. Learners move beyond surface-level understanding to develop deeper insight into research implications.

The assessment also emphasizes contextual application. Nurses consider organizational culture, available resources, and patient needs when translating evidence into practice. This ensures that evidence-based solutions are practical, ethical, and aligned with system priorities. The ability to balance evidence with real-world considerations is a hallmark of advanced professional competence.

Applying Leadership Strategies to Drive Meaningful Change

The culmination of doctoral learning is the integration of reflection and evidence into strategic leadership action. [NURS FPX 8006 Assessment 3](#) challenges learners to design initiatives that demonstrate their ability to lead improvement efforts within healthcare systems.

In this assessment, nurses develop structured plans that address identified challenges, such as quality improvement, policy implementation, or practice enhancement. These plans require clear goals, stakeholder engagement, and alignment with professional and organizational standards. Learners demonstrate leadership by translating knowledge into action.

Evaluation and sustainability are critical components of this stage. Nurses identify measurable outcomes and establish methods for monitoring progress over time. This reinforces accountability and ensures that proposed initiatives can achieve lasting impact. Strategic thinking and adaptability are emphasized as essential leadership skills.

The Role of Progressive Assessment in Doctoral Education

Doctoral nursing assessments are intentionally sequenced to support continuous professional development. Reflection builds awareness, evidence analysis strengthens judgment, and leadership planning enables effective action. Together, these elements prepare nurses to function as scholars and leaders within dynamic healthcare environments.

This progression also fosters lifelong learning. Doctoral-prepared nurses develop the confidence to evaluate emerging evidence, adapt to evolving healthcare demands, and guide teams through complex change processes. The integration of scholarship and leadership ensures readiness for advanced professional roles.

By engaging deeply with each phase of learning, nurses cultivate a professional mindset grounded in inquiry, ethical responsibility, and system-level thinking.

Conclusion

Advanced nursing practice requires more than experience; it demands reflection, evidence-based reasoning, and strategic leadership. Through **NURS FPX 8006 Assessment 1**, **NURS FPX 8006 Assessment 2**, and **NURS FPX 8006 Assessment 3**, doctoral learners develop the competencies needed to influence practice, improve outcomes, and lead change within healthcare systems.

This structured educational pathway equips nurses with the skills and confidence necessary to contribute meaningfully to the future of nursing and healthcare leadership.